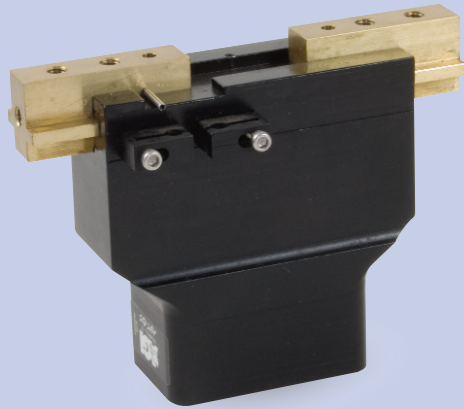




AGPT-1125 Parallel Gripper

T-Slot Bearing Series



FEATURES AND BENEFITS

- Jaws are T-Slot bearing supported to prevent jaw breakage and offer superior load bearing performance.
- High gripping force to weight ratio.
- True parallel jaw motion for easy tooling.
- Units are permanently lubricated for non-lube air operation, allowing for compliance with OSHA regulations.
- Proximity switches are available to monitor open and closed position of the jaws.
- AGPT is fully field repairable for cost savings and minimum down time.
- Linkage is guided in the body for precise center repeatability.

SPECIFICATIONS

Design: Parallel, Double Acting, Synchronized Jaws

Stroke: 1.125 in [28.6 mm]

Gripping Force Per Jaw @ 80 PSI [5.5 BAR]

Closing: 30 PSI [133 N]

Opening: 27 PSI [120 N]

Time:

Close: 0.20 sec [0.20 sec]

Open: 0.20 sec [0.20 sec]

Pressure Range:

Low/High 10-120 PSI [7-8 BAR]

Temperature Range:

Low/High -20°/180°F [-28°/80°C]

Side Play:

± 0.001 [.03 mm]

Repeatability from Center:

± 0.001 [.03 mm]

Loading Capacity:

	Static	Dynamic
Max Tensile T	100 lbs [444 N]	30 lbs [133 N]
Max Compressive C	100 lbs [444 N]	30 lbs [133 N]
Max Moment M_x	200 in/lb [22.6 Nm]	25 in/lb [5.6 Nm]
Max Moment M_y	250 in/lb [28 Nm]	30 in/lb [6.7 Nm]
Max Moment M_z	200 in/lb [22.6 Nm]	25 in/lb [5.6 Nm]

Max Tensile T

100 lbs [444 N]

30 lbs [133 N]

Max Compressive C

100 lbs [444 N]

30 lbs [133 N]

Max Moment M_x

200 in/lb [22.6 Nm]

25 in/lb [5.6 Nm]

Max Moment M_y

250 in/lb [28 Nm]

30 in/lb [6.7 Nm]

Max Moment M_z

200 in/lb [22.6 Nm]

25 in/lb [5.6 Nm]

Material: High Strength, Hard Coated aluminum bronze alloys, Steel

Weight:

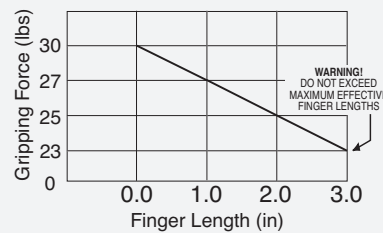
1 lb. [.5 kg]

Piston Diameter:

1.00 in [25.4 mm]

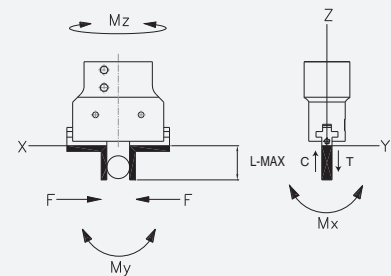
January 2008 - PATENTED Made in the USA

HOLDING FORCES CHART



WARNING! Do not exceed tooling jaw length. See Chart above.

LOADING INFORMATION



LOOK! More Technical specifications for sensors on "Sensors Accessories" page.

HOW TO ORDER

When ordering, please specify: Design/Model Number and Options.

DESIGN/MODEL

AGPT-500
AGPT-1000
AGPT-1125

METRIC

SENSOR TYPE*

1 = NPN
2 = PNP

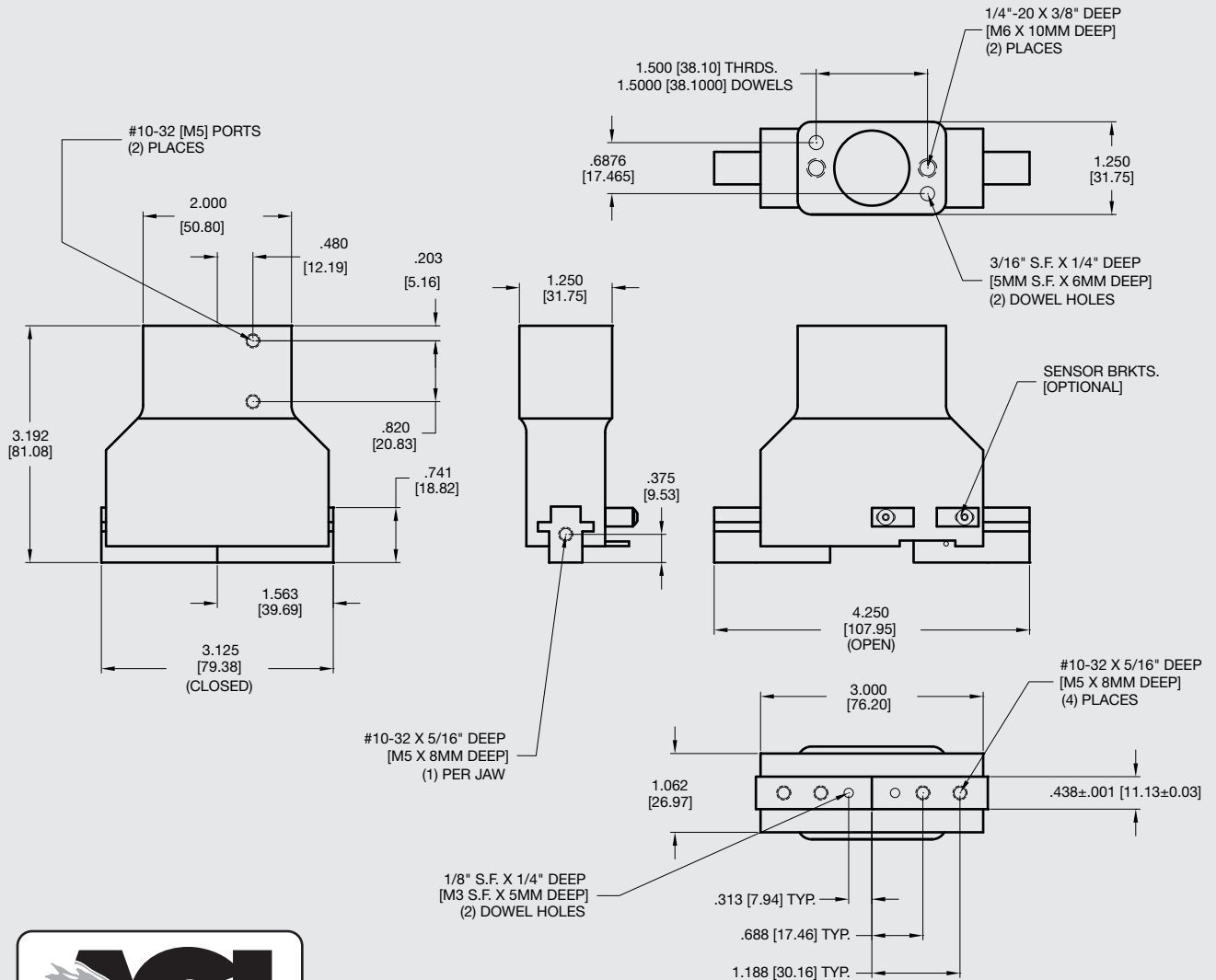
AGPT-1125 - M - 3 - 1

SENSOR OPTIONS

1 = CLOSED
2 = OPEN
3 = BOTH

* NOTE: Proximity 4mm dia., 5-24 VDC, 22 mA and comes with 2 meter cable.

Sensor Part # SNC04, SPC04



Unless noted, all tolerances are as indicated here:



All Dowel Holes are SF (Slip Fit) Locational Tolerance ± .0005" [0.13mm]



Metric Threads Course Pitch

Imperial:
Inch 0.00 = ±.01
0.000 = ±.005
0.0000 = ±.0005

Metric:
[0.] = ±.25
[mm] [0.0] = ±.13
[0.00] = ±.013