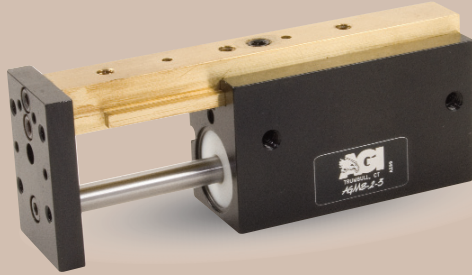




# AGMS-2-3 Mini Powered Slide

## Built-In Air Cylinder



### FEATURES AND BENEFITS

- T-Slot bearing support for the carriage and end plate offers superior load bearing performance throughout the stroke.
- Standard built-in stroke adjustment and stroke lock for precise, repetitive operation.
- Compact, lightweight unit with built-in cylinder.
- Piston seals are U-CUP type for long service life.
- Hall Effect sensors are available to monitor stroke position.
- Multiple mounting surfaces on the body and endplate with threaded and counterbored holes for easy mounting choices.

### SPECIFICATIONS

**Design:** Built-in air cylinder  
T-slot slide

**Stroke:** 1.5 in [38.1 mm]

**Thrust Force @ 80 PSI [5.5 BAR]**

Extended: 35 lbs [155 N]  
Retract: 33 lbs [146 N]

**Recommended Speed:**

2-12 in/sec  
[0.5-.3m/sec]

**Pressure Range:**

Low/High 20-120 PSI [1.4-8 BAR]

**Temperature Range:**

Low/High -20°/150°F [-28°/80°C]

**Side Play:**

± 0.001 [.03 mm]

**Maximum Payload:**

24 lbs [10.8 kg]

**Material:** High Strength, Aluminum Alloys, Bronze

**Weight:**

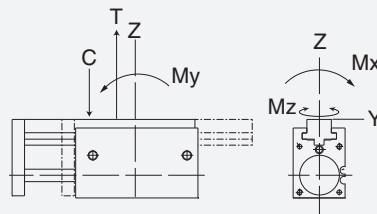
6.8 oz [193 g]

**Piston Diameter:**

.750 in [19 mm]

January 2008 - PATENTED Made in the USA

### MAXIMUM FORCES & MOMENTS



	Static	Dynamic
Max Tensile T	180 lbs [800 N]	77 lbs [342 N]
Max Compressive C	180 lbs [800 N]	77 lbs [342 N]
Max Moment $M_x$	70 in/lb [8 Nm]	34 in/lb [3.8 Nm]
Max Moment $M_y$	70 in/lb [8 Nm]	34 in/lb [3.8 Nm]
Max Moment $M_z$	70 in/lb [8 Nm]	34 in/lb [3.8 Nm]

### HOW TO ORDER

When ordering, please specify:  
Design/Model Number and Options.

**DESIGN/MODEL**

AGMS-2-1  
AGMS-2-2  
AGMS-2-3  
AGMS-2-4

**METRIC**

**AGMS-2-3**

**SENSOR TYPE**

1 = NPN  
2 = PNP

**M - 3**

**- 1 - 1**

**SENSOR OPTIONS\***

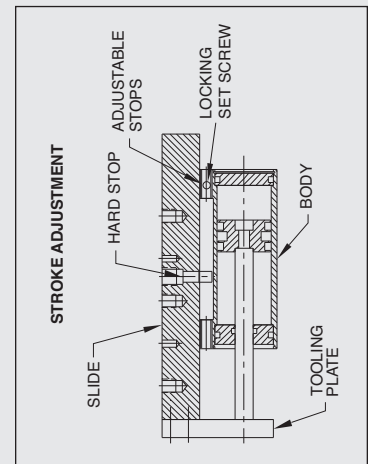
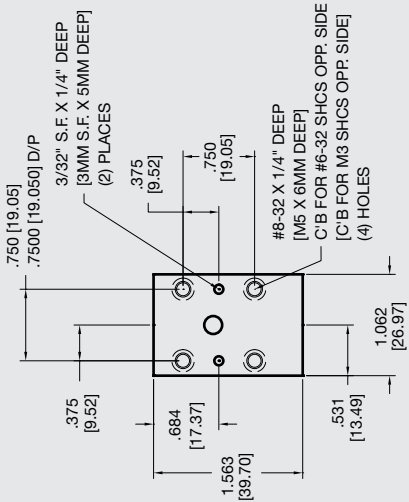
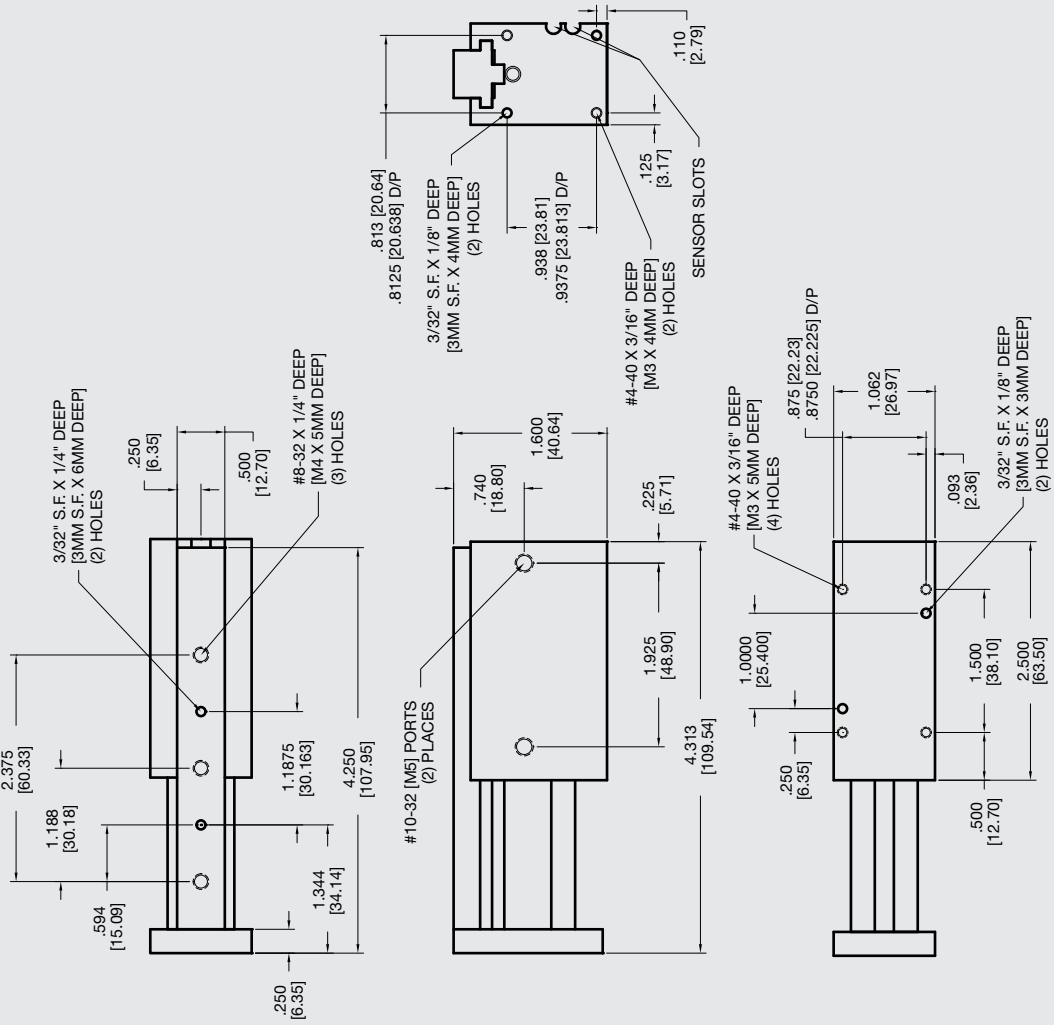
1 = LEFT  
2 = RIGHT  
3 = BOTH

**SENSOR CONNECTOR**

1 = POTTED  
2 = QUICK DISCONNECT  
3 = QUICK DISCONNECT WITH RIGHT ANGLE

\* NOTE: Hall Effect sensors are hard wired with 20" pigtail.

Sensor Part # SHN01, SHP01, SHNQ3, SHPQ3



**Unless noted, all tolerances are as indicated here:**



All Dowel Holes are SF (Slip Fit) Locational Tolerance  $\pm .0005"$  [0.13mm]



Metric Threads Course Pitch

**Imperial:**  
Inch 0.00 =  $\pm .01$   
0.000 =  $\pm .005$   
0.0000 =  $\pm .0005$

**Metric:** [0.] =  $\pm .25$   
[mm] [0.0] =  $\pm .13$   
[0.00] =  $\pm .013$