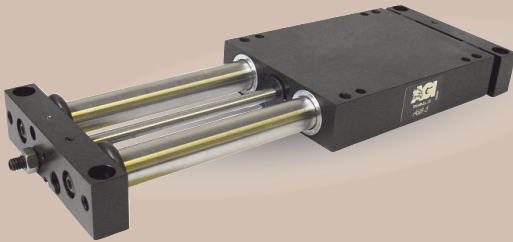




# AGS-5 Powered Slide

## Built-In Air Cylinder



### FEATURES AND BENEFITS

- Compact lightweight unit with built-in air cylinder.
- Linear ball bearings ride on precision hardened ground steel shafts.
- Units are permanently lubricated.
- Pistons seals are U-Cup type for long service life.
- Aluminum body and end blocks contain tapped holes and dowel pin holes for precision mounting or fixturing.
- Custom mounting holes and air ports can be added. Please consult factory.
- Main body or end blocks can be anchored due to the 1/16" height clearance.
- Standard built-in stroke adjustment for precise repetitive operation.
- Proximity switches are available to monitor end of stroke position of the body.
- Optional shock absorbers can be ordered for smooth operation.
- Series AGS is fully field repairable for cost savings and minimum down time. Repair kits are available for repairs or maintenance.

### SPECIFICATIONS: AGS-5

**Design:** Built-in air cylinder, linear bearings on steel hardened shafts

**Stroke:** 5 in

**Thrust Force @ 80 PSI [5.5 BAR]**

50 lbs [222 N]

**Recommended Speed:**

2-14 in/sec  
[0.5-.35 m/sec]

**Pressure Range:**

Low/High 20-120 PSI [1.4-8 BAR]

**Temperature Range:**

Low/High -20°/150°F [-28°/80°C]

**Side Play:**

± 0.001 [.03 mm]

**Maximum Payload:** 50 lbs [22.6 kg]

**Material:** High Strength, Aluminum Alloys, Steel Components

**Weight:** 6.5 lbs [3 kg]

**Piston Diameter:** 1.0 in [25 mm]

### SPECIFICATIONS: AGS-5-X

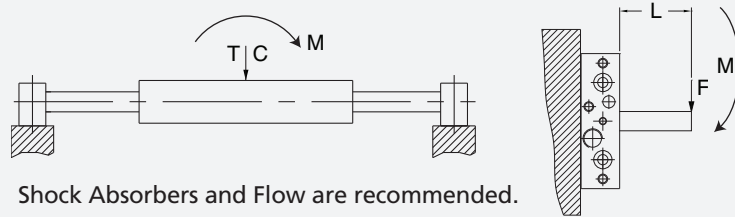
**Custom Stroke:** X= 0 to 5 in [XXX mm]

**All Other Specifications:** Same As Above

### PAYLOAD DATA

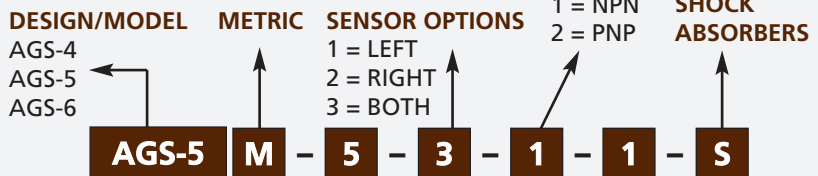
Max Tensile T	150 lbs	[667 N]
Max Compressive C	150 lbs	[667 N]
Max Moment $M_x$	550 in/lb	[62 Nm]
Max Moment $M_y$	550 in/lb	[62 Nm]
Max Moment $M_z$	550 in/lb	[62 Nm]

Deflection @ Max load 0.003  
Maximum Payload (50 lbs)  
Recommended load for smooth operation.



### HOW TO ORDER

**When ordering, please specify:**  
Design/Model Number and Options.



AGS-4 STROKE (1", 2", 3", 4")  
AGS-5 STROKE (1", 2", 3", 4", 5")  
AGS-6 STROKE (1", 2", 3", 4", 5", 6")

**SENSOR CONNECTOR**  
1 = POTTED  
2 = QUICK DISCONNECT  
3 = QUICK DISCONNECT WITH RIGHT ANGLE

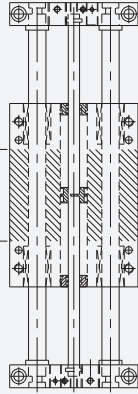
\* NOTE: Proximity sensors are 8 mm diam., 12-30 VDC, 50 mA and come with 2 meter cable.

**Sensor Part # SNC08, SNQ08, SPC08, SPQ08**

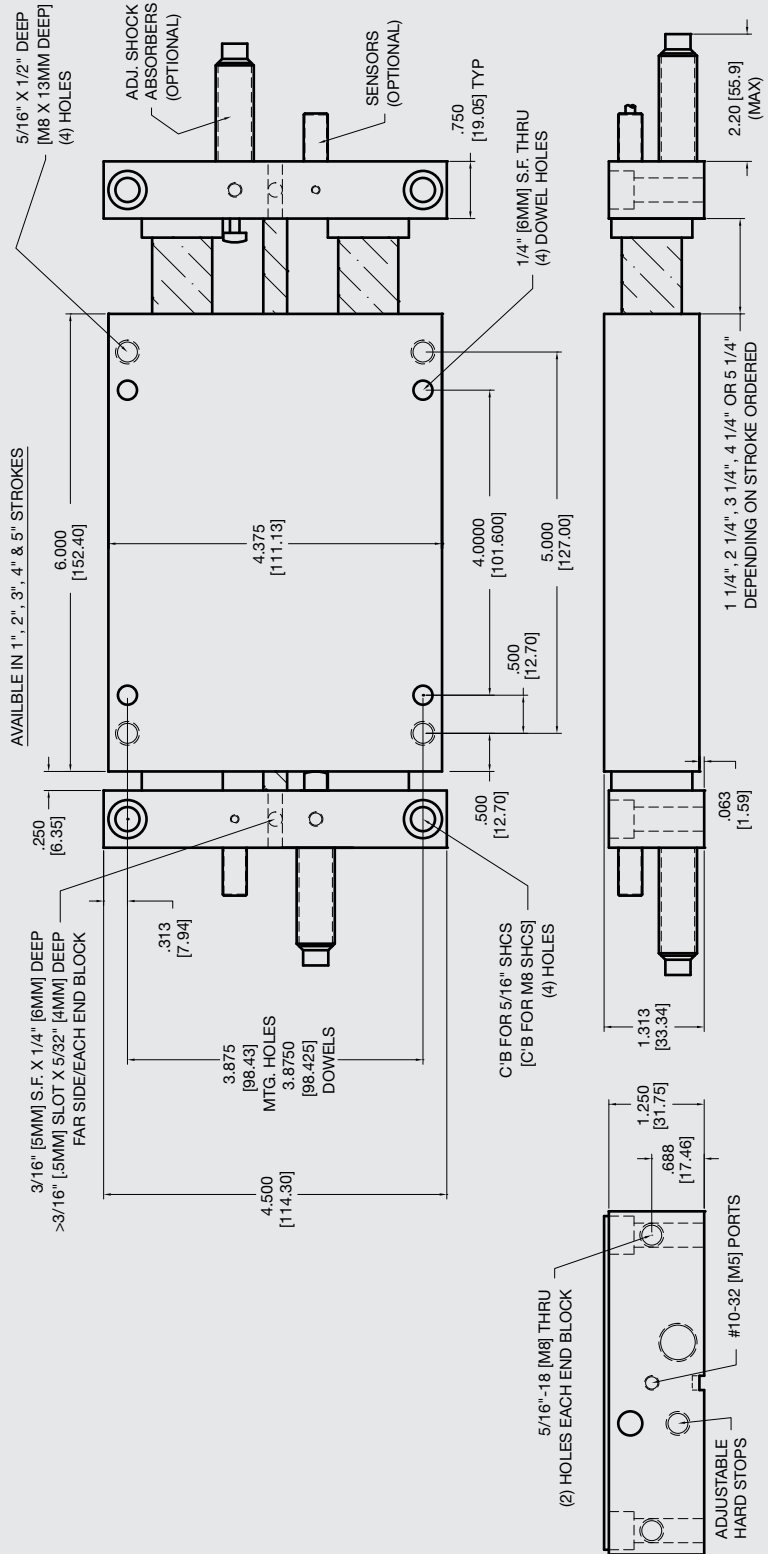
January 2008 - PATENTED Made in the USA

### CUSTOM MOUNTING AREA

**NOTE:** The end blocks and body can be drilled and tapped from top of back side.  
 Shaded area available for custom drilling and tapping.  
 For drilling and tapping end blocks, please consult the factory.



**WARNING!** Do not exceed mounting screw depth. **LOOK!** More Technical specifications for sensors on "Sensors Accessories" page.



**Unless noted, all tolerances are as indicated here:**



All Dowel Holes are SF (Slip Fit) Locational Tolerance ± .0005" [0.13mm]



Metric Threads Course Pitch

**Imperial:**  
 Inch 0.00 = ±.01  
 0.000 = ±.005  
 0.0000 = ±.0005

**Metric:**  
 [0.] = ±.25  
 [0.0] = ±.13  
 [0.00] = ±.013