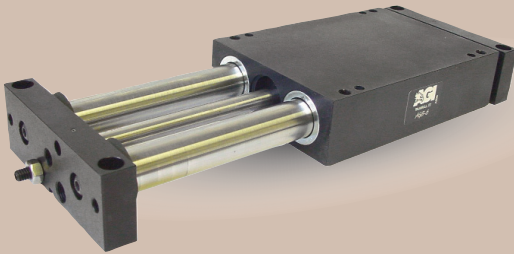




AGS-6 Powered Slide

Built-In Air Cylinder



FEATURES AND BENEFITS

- Compact lightweight unit with built-in air cylinder.
- Linear ball bearings ride on precision hardened ground steel shafts.
- Units are permanently lubricated.
- Pistons seals are U-Cup type for long service life.
- Aluminum body and end blocks contain tapped holes and dowel pin holes for precision mounting or fixturing.
- Custom mounting holes and air ports can be added. Please consult factory.
- Main body or end blocks can be anchored due to the 1/16" height clearance.
- Standard built-in stroke adjustment for precise repetitive operation.
- Proximity switches are available to monitor end of stroke position of the body.
- Optional shock absorbers can be ordered for smooth operation.
- Series AGS is fully field repairable for cost savings and minimum down time. Repair kits are available for repairs or maintenance.

SPECIFICATIONS: AGS-6

Design: Built-in air cylinder, linear bearings on steel hardened shafts

Stroke: 1-6 in

Thrust Force @ 80 PSI [5.5 BAR]

80 lbs [355 N]

Recommended Speed:

2-14 in/sec
[0.5-.35 m/sec]

Pressure Range:
Low/High

20-120 PSI [1.4-8 BAR]

Temperature Range:
Low/High

-20°/150°F [-28°/80°C]

Side Play:

± 0.001 [0.03 mm]

Maximum Payload:

100 lbs [45.3 kg]

Material: High Strength, Aluminum Alloys, Steel Components

Weight:

12 lbs [5.5 kg]

Piston Diameter:

1.25 in [31.7 mm]

SPECIFICATIONS: AGS-6-X

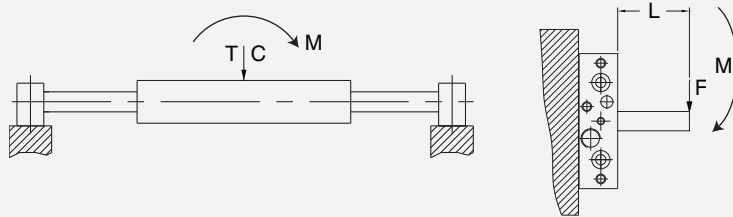
Custom Stroke: X= 0 to 6 in [152 mm]

All Other Specifications: Same As Above

PAYLOAD DATA

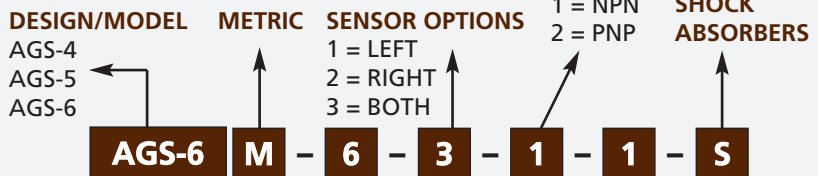
Max Tensile T	220 lbs	[980 N]
Max Compressive C	220 lbs	[980 N]
Max Moment M_x	1000 in/lb	[113 Nm]
Max Moment M_y	1000 in/lb	[113 Nm]
Max Moment M_z	1000 in/lb	[113 Nm]

Deflection @ Max load 0.003
Maximum Payload (100 lbs)
Recommended load for smooth operation.



HOW TO ORDER

When ordering, please specify:
Design/Model Number and Options.



AGS-4 STROKE (1", 2", 3", 4")
AGS-5 STROKE (1", 2", 3", 4", 5")
AGS-6 STROKE (1", 2", 3", 4", 5", 6")

SENSOR CONNECTOR
1 = POTTED
2 = QUICK DISCONNECT
3 = QUICK DISCONNECT WITH RIGHT ANGLE

* NOTE: Proximity sensors are 8 mm diam., 12-30 VDC, 50 mA and come with 2 meter cable.

Sensor Part # SNC08, SNQ08, SPC08, SPQ08

January 2008 - PATENTED Made in the USA

