

AGT-4 Powered Slide Linear Thruster



FEATURES AND BENEFITS

- Floating piston rod coupling eliminates cylinder binding.
- Compact, lightweight unit with replaceable air-cylinder.
- Units are permanently lubricated.
- Optional stroke adjustment for precise, repetitive operation.
- Proximity switches are available to monitor end of stroke position of the body.
- Optional shock absorbers can be ordered for smooth operation.
- Aluminum body end blocks contain taped holes and dowel pin holes for precision mounting or fixturing.
- Standard end plate to stop shaft vibrations.

SPECIFICATIONS

Design: Replaceable air cylinder, linear bearings on steel hardened shafts

Stroke: 8 in max. (1" increments)
[203 mm] [25.4 mm]

Thrust Force @ 80 PSI [5.5 BAR]

70 lbs (multiply force factor by input pressure in PSI)

Extended: 0.88 lbs [4 N]

Retract: 0.81 lbs [3.6 N]

Recommended Speed:

1-40 in/sec
[XX-XX m/sec]

Pressure Range:

Low/High 20-120 PSI [1.4-8 BAR]

Temperature Range:

Low/High -20°/150°F [-28°/80°C]

Side Play: ± 0.001 [0.03 mm]

Deflection: See Chart

Maximum Payload: 25 lbs [11.3 kg]

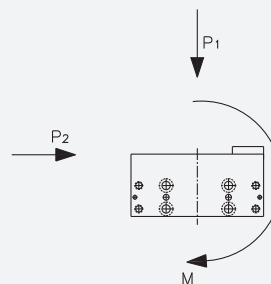
Material: High Strength, Aluminum Alloys, Steel Components

Weight: 3.75 lbs + 3 oz/in
[1.7 kg + 2.6 g/mm]

Shaft Diameter: 1/2 in [12.7 mm]

Piston Diameter: 1 1/16 in [27 mm]

PAYLOAD FORCES

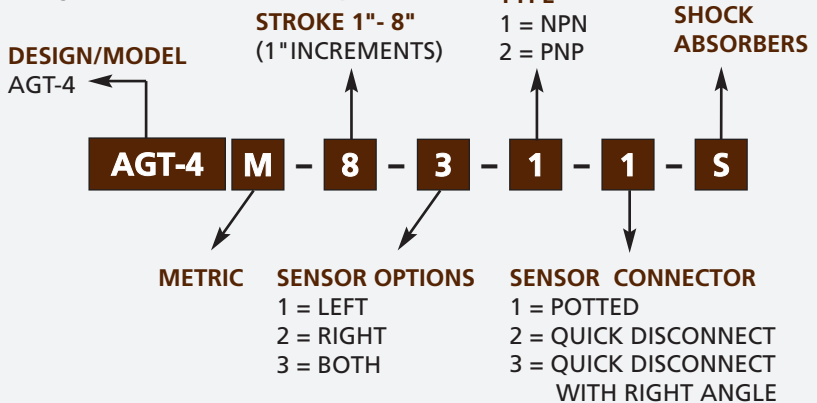


WARNING! Do not exceed mounting screw depth.

LOOK! More Technical specifications for sensors on "Sensors Accessories" page.

HOW TO ORDER

When ordering, please specify:
Design/Model Number and Options.



* NOTE: Proximity sensors are 8 mm diam., 12-30 VDC, 50 mA and come with 2 meter cable.

Sensor Part # SNC08, SNQ08, SPC08, SPQ08

January 2008 - PATENTED Made in the USA

