

CUSTOM MANIFOLDS AVAILABLE

ALSO FOR DOT APPLICATIONS.

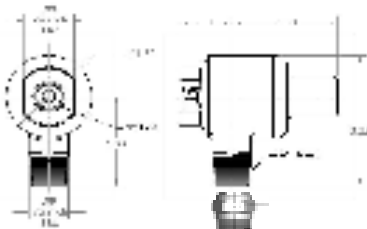
PLEASE CONSULT THE FACTORY

IF YOU NEED MORE INFORMATION.



We are constantly improving FOR YOU ...

New 800 / 850 Series Pressure Protection valve...



Swivel option available



Pressure protection valve.
Note : Compact design allows for minimal hangout beyond tank.

Pressure Protection Valve Protects the air brake system in the event of a leak or failure within the suspension / auxiliary air systems.

Specifications :

- Material: Brass
- Diaphragm: Buna
- Temp Rating: -40°F To +225°F
- Max Pressure: 200 psi
- Reverse check when closed
- Non-Adjustable Standard
- Standard Thread Sealed Male Threads
- Adjustable (optional)

SIMPLE HOW-TO-ORDER INSTRUCTIONS				Closing / Opening Pressure ***	OPTIONS
800 SERIES	MODEL	Thread "A"	Port "B"		
800 = Pipe Thread	02 = 90° Non-Swivel	14 = 1/4" NPTF	14 = 1/4" NPTF	06 = 60 / 65 PSI	
	03 = 90° Full Swivel	38 = 3/8" NPTF	38 = 3/8" NPTF	07 = 70 / 75 PSI	A = Adjustable
				08 = 80 / 85 PSI	
Sample 800 -	03	38	14		
<i>(Pressure protection valve inlet 3/8" NPTF full swivel, outlet 1/4" NPTF, 60 / 65 PSI Pressure).</i>				Closing / Opening Pressure***	OPTIONS
850 SERIES	MODEL	Thread "A"	Port "B"		
850 = Pipe Thread	02 = 90° Non-Swivel	14 = 1/4" NPTF	14 = 1/4" PTC	06 = 60 / 65 PSI	
and PTC Fitting	03 = 90° Full Swivel	38 = 3/8" NPTF	38 = 3/8" PTC	07 = 70 / 75 PSI	A = Adjustable
			12 = 1/2" PTC	08 = 80 / 85 PSI	

NOTE: 850 Series Valve Has a Male Pipe Thread on "A" Thread and a Push-To-Connect Fitting built In the "B" Port.

*** Consult factory for additional pressure settings.



SERIES NQ-NTA - Air Brake Brass Compression Fittings

PRODUCT SPECIFICATIONS

TEMPERATURE RANGE
PRESSURE
SHAPES MATERIAL
STRAIGHTS MATERIAL

-40 ° F to 325° F
 200 PSI NOMINAL / 400 PSI MAX
FORGED SAE CA377 BRASS
EXTRUDED SAE C360 BRASS

MEETS SAE J246, J1131 AIR BRAKE STANDARDS AND ALL DOT STANDARDS. FITTINGS TO BE USED WITH SAE J844 TUBING.



NQ54-NTA COMPRESSION 45 DEG MALE ELBOW		
PART NUMBER	TUBE O.D.	PIPE THREAD
NQ54-NTA-4X2	1/4	1/8
NQ54-NTA-4X4	1/4	1/4
NQ54-NTA-6X4	3/8	1/4
NQ54-NTA-6X6	3/8	3/8
NQ54-NTA-8X6	1/2	3/8
NQ54-NTA-8X8	1/2	1/2
NQ54-NTA-10X8	5/8	1/2



NQ60-NTA COMPRESSION SLEEVE		
PART NUMBER	TUBE O.D.	PIPE THREAD
NQ60-NTA-4	1/4	
NQ60-NTA-6	3/8	
NQ60-NTA-8	1/2	
NQ60-NTA-10	5/8	
NQ60-NTA-12	3/4	



NQ60-NTA COMPRESSION NUT		
PART NUMBER	TUBE O.D.	PIPE THREAD
NQ61-NTA-4	1/4	
NQ61-NTA-6	3/8	
NQ61-NTA-8	1/2	
NQ61-NTA-10	5/8	
NQ61-NTA-12	3/4	



NQ62-NTA COMPRESSION UNION		
PART NUMBER	TUBE O.D.	PIPE THREAD
NQ62-NTA-4	1/4	
NQ62-NTA-6	3/8	
NQ62-NTA-8	1/2	
NQ62-NTA-10	5/8	
NQ62-NTA-12	3/4	



NQ64-NTA COMPRESSION UNION TEE		
PART NUMBER	TUBE O.D.	PIPE THREAD
NQ64-NTA-4	1/4	
NQ64-NTA-6	3/8	
NQ64-NTA-8	1/2	
NQ64-NTA-10	5/8	

SERIES NQ-NTA - Air Brake Brass Compression Fittings

NQ65-NTA COMPRESSION UNION ELBOW		
PART NUMBER	TUBE O.D.	PIPE THREAD
NQ65-NTA-4	1/4	
NQ65-NTA-6	3/8	
NQ65-NTA-8	1/2	



NQ66-NTA COMPRESSION FEMALE CONNECTOR		
PART NUMBER	TUBE O.D.	PIPE THREAD
NQ66-NTA-4X2	1/4	1/8
NQ66-NTA-4X4	1/4	1/4
NQ66-NTA-6X4	3/8	1/4
NQ66-NTA-6X6	3/8	3/8



NQ68-NTA COMPRESSION MALE CONNECTOR		
PART NUMBER	TUBE O.D.	PIPE THREAD
NQ68-NTA-4X2	1/4	1/8
NQ68-NTA-4X4	1/4	1/4
NQ68-NTA-4X6	1/4	3/8
NQ68-NTA-6X2	3/8	1/8
NQ68-NTA-6X4	3/8	1/4
NQ68-NTA-6X6	3/8	3/8
NQ68-NTA-6X8	3/8	1/2
NQ68-NTA-8X4	1/2	1/4
NQ68-NTA-8X6	1/2	3/8
NQ68-NTA-8X8	1/2	1/2
NQ68-NTA-10X6	5/8	3/8
NQ68-NTA-10X8	5/8	1/2
NQ68-NTA-12X8	3/4	1/2
NQ68-NTA-12X12	3/4	3/4



NQ69-NTA COMPRESSION MALE ELBOW		
PART NUMBER	TUBE O.D.	PIPE THREAD
NQ69-NTA-4X2	1/4	1/8
NQ69-NTA-4X4	1/4	1/4
NQ69-NTA-4X6	1/4	3/8
NQ69-NTA-6X2	3/8	1/8
NQ69-NTA-6X4	3/8	1/4
NQ69-NTA-6X6	3/8	3/8
NQ69-NTA-6X8	3/8	1/2
NQ69-NTA-8X4	1/2	1/4
NQ69-NTA-8X6	1/2	3/8
NQ69-NTA-8X8	1/2	1/2
NQ69-NTA-10X6	5/8	3/8
NQ69-NTA-10X8	5/8	1/2
NQ69-NTA-12X8	3/4	1/2
NQ69-NTA-12X12	3/4	3/4

