

Differences between RCP and RCP2

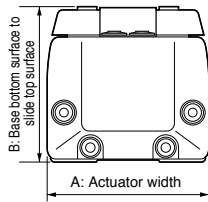
Changes to Actuator

Slider Type



1 Actuator Width/Height

The dimensions of the RCP2 series remain the same as the RCP series.

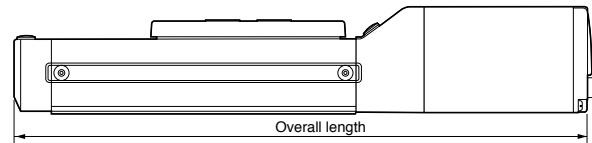


	RCP A X B	RCP2 A X B
SA5	52 X 50	←
SA6	58 X 53	←
SA7	—	73 X 64

* The dimension denoted by "←" is the same as the corresponding RCP dimension.
The dimension denoted by "—" indicates that no corresponding setting is available.

2 Overall Length

The overall length of the RCP2 series is 28 or 33 mm shorter than the RCP series.



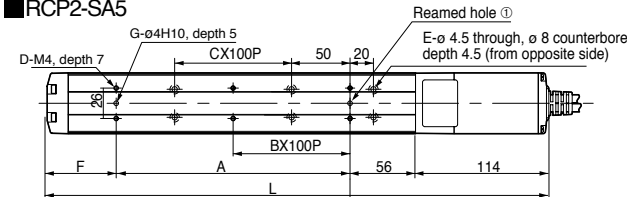
	RCP	RCP2	Difference
SA5	ST + 257	ST + 229	- 28mm
SA6	ST + 283	ST + 250	- 33mm
SA7	—	ST + 303	—

* The dimension denoted by "—" indicates that no corresponding setting is available.

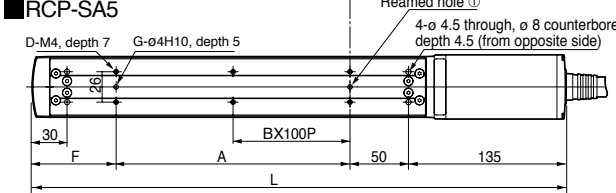
3 Mounting Holes in Base

The dimensions of tapped holes are basically the same between the RCP and RCP2 series. (Some exceptions apply. Refer to the figure below.)
With the RCP2 series, the position relationship of each tapped hole and the actuator has been changed, as illustrated below.

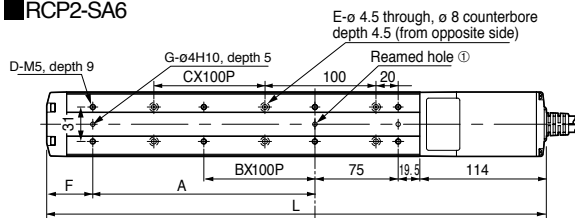
RCP2-SA5



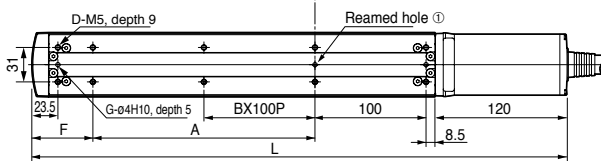
RCP-SA5



RCP2-SA6



RCP-SA6



Top: RCP2-SA5
Bottom: RCP-SA5

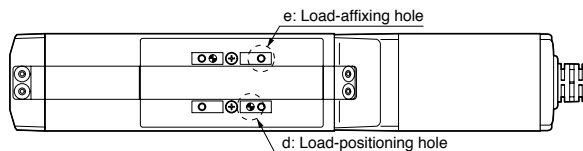
Stroke	50	100	150	200	250	300	350	400	450	500
L	279	329	379	429	479	529	579	629	679	729
	307	357	407	457	507	557	607	657	707	757
A	73	100	100	200	200	300	300	400	400	500
	0	100	100	200	200	300	300	400	400	500
B	0	0	0	1	1	2	2	3	3	4
	0	0	0	1	1	2	2	3	3	4
C	0	0	1	1	2	2	3	3	4	4
	—	—	—	—	—	—	—	—	—	—
D	4	4	4	6	6	8	8	10	10	12
	2	4	4	6	6	8	8	10	10	12
E	4	4	6	6	8	8	10	10	12	12
	—	—	—	—	—	—	—	—	—	—
F	36	59	109	59	109	59	109	59	109	59
	122	72	122	72	122	72	122	72	122	72
G	2	2	2	2	2	2	2	2	2	2
	1	2	2	2	2	2	2	2	2	2

Top: RCP2-SA6
Bottom: RCP-SA6

Stroke	50	100	150	200	250	300	350	400	450	500	550	600
L	300	350	400	450	500	550	600	650	700	750	800	850
	333	383	433	483	533	583	633	683	733	783	833	883
A	0	100	100	200	200	300	300	400	400	500	500	600
	0	100	100	200	200	300	300	400	400	500	500	600
B	0	0	0	1	1	2	2	3	3	4	4	5
	0	0	0	1	1	2	2	3	3	4	4	5
C	0	0	1	1	2	2	3	3	4	4	5	5
	—	—	—	—	—	—	—	—	—	—	—	—
D	4	6	6	8	8	10	10	12	12	14	14	16
	6	8	8	10	10	12	12	14	14	16	16	18
E	4	4	6	6	8	8	10	10	12	12	14	14
	—	—	—	—	—	—	—	—	—	—	—	—
F	91.5	41.5	91.5	41.5	91.5	41.5	91.5	41.5	91.5	41.5	91.5	41.5
	104.5	54.5	104.5	54.5	104.5	54.5	104.5	54.5	104.5	54.5	104.5	54.5
G	2	3	3	3	3	3	3	3	3	3	3	3
	3	3	3	3	3	3	3	3	3	3	3	3

4 Load-Mounting Hole in Slider

The load-mounting hole in the slider remains the same between the RCP and RCP2 series.
The dimension from reamed hole ① (shown above) to the load-mounting hole in the slider is also the same.



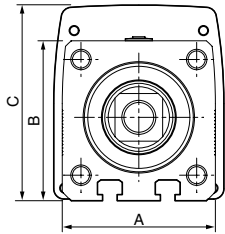
	d		e	
	RCP	RCP2	RCP	RCP2
SA5	ø4H10, depth 6	←	M4, depth 9	←
SA6	ø4H10, depth 6	←	M5, depth 9	←
SA7	—	ø5H10, depth 10	—	M5, depth 10

* The dimension denoted by "←" is the same as the corresponding RCP dimension.
The dimension denoted by "—" indicates that no corresponding setting is available.
• The mounting hole position is the same.

Rod Type

1 Actuator Width/Height

With the RSA, dimension B is 2 mm longer and dimension C is 1.5 mm longer.



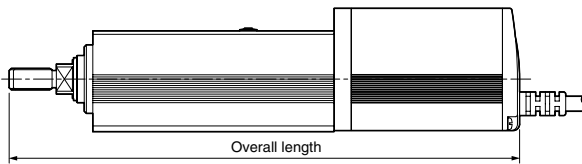
(Unit: mm)

	RCP		RCP2	
	A X B	C	A X B	C
RXA	—	—	35 X 35	43
RSA	45 X 45	56	45 X 47	<i>57.5</i>
RMA	64 X 64	75	←	←

* The items in italic indicate changes from the current models.
 The dimension denoted by "←" is the same as the corresponding RCP dimension.
 The dimension denoted by "—" indicates that no corresponding setting is available.

2 Overall Length

The overall length of the RCP2 series is 6 mm or 8 mm shorter than the RCP series.

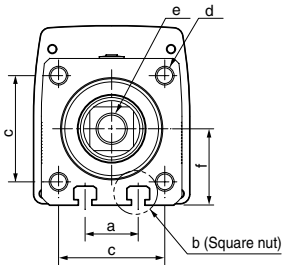


(Unit: mm)

	RCP	RCP2	Difference from RCP
RXA	—	ST + 192	
RSA	ST + 196	ST + 188	—8mm
RMA	ST + 258	ST + 252	—6mm

3 Frame-Mounting Dimension, Load-Mounting Dimension

With the RSA, the square nut for installation in the T-slot slot provided in the bottom surface of the base has been changed from M3 to M4.
 The thread diameter at the shaft tip has also been changed.



	RXA	
	RCP	RCP2
a	—	—
b	—	—
c	—	28
d	—	M4, depth 10
e	—	M10X1.25
f	—	17.5

	RSA	
	RCP	RCP2
a	17	←
b	M3	<i>M4</i>
c	34	←
d	M6, depth 12	←
e	M14X1.5	<i>M10X1.25</i>
f	225	<i>245</i>

(Unit: mm)

	RMA	
	RCP	RCP2
a	25	←
b	M6	←
c	50	←
d	M8, depth 15	←
e	M18X1.25	<i>M14X1.5</i>
f	32	←

* The items in italic indicate changes from the current models.
 The dimension denoted by "←" is the same as the corresponding RCP dimension.
 The dimension denoted by "—" indicates that no corresponding setting is available.

ERC Actuators
 RCP2 Actuators
 RCS Actuators
 Information on Guide Types
 Actuator Options
 How to Install Actuator
 ERC Controllers
 RCP2 Controllers
 RCS Controllers