

New

Cable, Hose protection, Guiding device Plarailchains SP Series

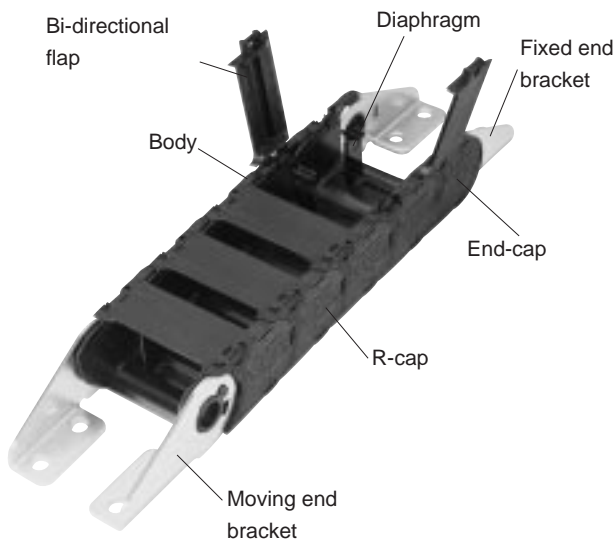
Features

- Compared with conventional products, improved durability of cables, hoses, and components.
 - Special resins reduce wear and tear by one-fourth to one-fifth of conventional products.
- The Plarailchains' body has been improved for extended durability, and longer life.
 - Reinforced filler and composite materials are utilized with state-of-the-art designing.
- Less water absorption compared with conventional nylon-related materials, thus size transformation and hardness drop less occur.
- Greater sound arresting performance compared with conventional products.
- New materials allow for greater interior space while allowing the Plarailchains unit as a whole to be smaller.
- Brackets in one type only for each moving end use and fixed end use, simplifies ordering.
 - Choice from 16 different ways of attaching made possible by orientating same brackets.

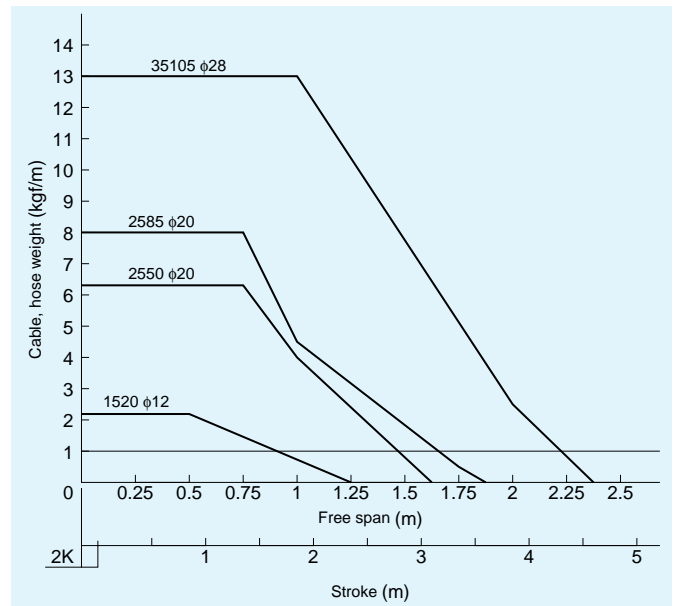
Specifications

Item \ Model	1520	2550	2585	35105
Pitch(mm)	25	36	43.5	62.5
No. of links(/m)	40	28	23	16
Max. cable dia.(mm)	φ12	φ20	φ20	φ28
Free span(m)	Refer to the capacity chart.			
Max. stroke(m)	2.4	3.1	3.6	4.6
Max. cable mass(kg)	2.2	6.5	8	13
Max. speed(m/s)	3			
Plarailchain mass(kg)	0.36	0.86	1.05	1.96
Service conditions	Avoid acidic or basic atmosphere and hot water.			
Service temperature range(°C)	-10~+80			
Noise level(Compared with conventional PISCO model)	-8	-10	-3	
Water absorption(%)	1.3			
Chemical-proof	Refer to page 624.			

Individual Description



Capacity chart



Calculation of number of links

Number of links is to be calculated by the following equation:

$$n = \frac{\frac{S}{2} + \pi R + 2K}{P}$$

n : Number of links

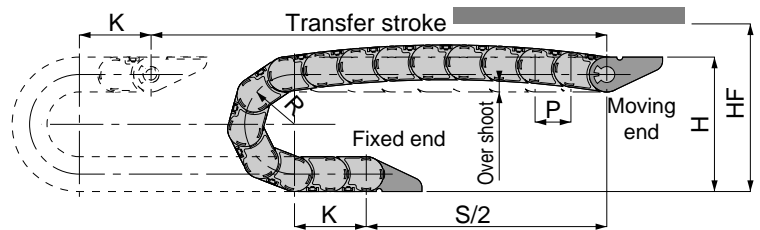
(Figures below decimal point are raised to one positive number)

S : Transfer stroke (mm)

R : Bending radius (mm)

K : Play (mm)

P : Pitch (mm)



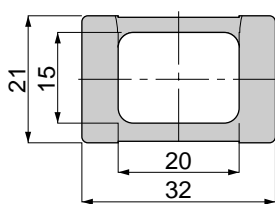
*HF in the above diagram is the clearance height in which overshoot of free span Parailchain without cable or hose inside it is taken into account.

Assembly measurement and weight chart

Model	R	H (mm)	HF (mm)	P (mm)	K (mm)	mass / link (g)
SP 1520	R 30	81	100	25	30 or more	9
	R 50	121	140			
	R 75	171	190			
SP 2550	R 50	135	160	36	50 or more	31
	R 75	185	210			
	R100	235	260			
SP 2585	R 60	155	180	43.5	50 or more	46
	R100	235	260			
	R150	335	360			
SP 35105	R 100	250	280	62.5	63 or more	123
	R 125	300	330			
	R 150	350	380			
	R 200	450	480			

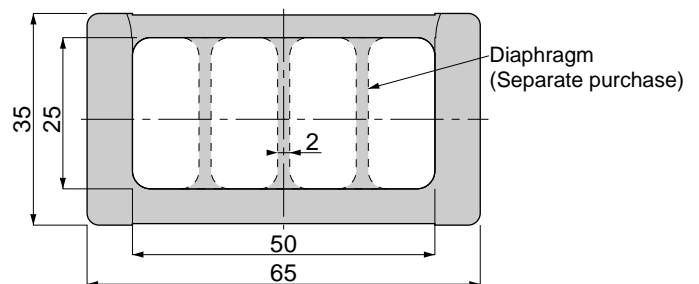
Size

SP 1520



Bending radius	R30, R50, R75
link pitch(mm)	25
No. of links(/m)	40 links

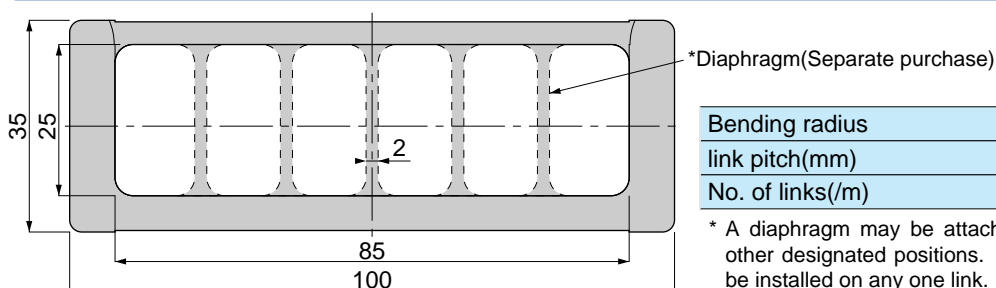
SP 2550



Bending radius	R50, R75, R100, R150
link pitch(mm)	36
No. of links(/m)	28 links

* A diaphragm may be attached in any position in addition to three other designated positions. Also, more than one diaphragm may be installed on any one link.

SP 2585

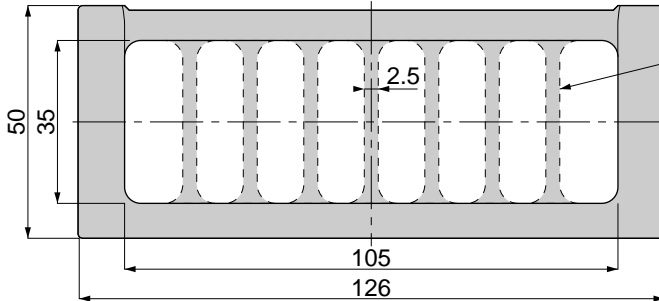


Bending radius	R60, R100, R150
link pitch(mm)	43.5
No. of links(/m)	23 links

* A diaphragm may be attached in any position in addition to five other designated positions. Also, more than one diaphragm may be installed on any one link.

Size

SP 35105

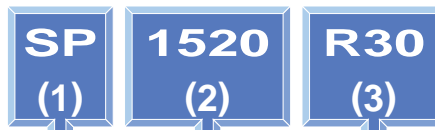


*Diaphragm(Separate purchase)

Bending radius	R100, R125, R150, R200
link pitch(mm)	62.5
No. of links(/m)	16 links

* A diaphragm may be attached in any position in addition to seven other designated positions. Also, more than one diaphragm may be installed on any one link.

Model Designation(Example)



(1)Type

SP : SP Series

(2)Size(Inner dimensions·Height×Width)

Code	1520	2550	2585	35105
Size(mm)	15×20	25×50	25×85	35×105
Size(inch)	0.59×0.79	0.98×1.97	0.98×3.35	1.38×4.13

(3)Bending Radius

R	R30	R50	R60	R75	R100	R125	R150	R200
1520	○	○		○				
2550		○		○	○		○	
2585			○		○		○	
35105					○	○	○	○

Attachment Metal Bracket Model Designation(Example)

➔ Please refer to page 624 regarding Model Designation for Blackets.

⚠ Detailed Safety Instructions

Before using the PISCO device, be sure to read the "Safety Instructions", "Common Safety Instructions for Products Listed in This Manual" on page 23~24.

⚠ Warning

1. Never step on Plarailchain. Otherwise the chain may break and will fall down.
2. When connecting, disconnecting, opening, closing, or carrying out maintenance and checks, hold the Plarailchains motionless, otherwise the Plarailchain may run or fall under its own weight, thus doing injuries to you.
3. Pay attention to the flexing areas of the Plarailchains. You can get injured with your hand caught in the flexing area.
4. Before conducting maintenance or checks of Plarailchains, be sure to turn off power supply to the equipment for your safety.
5. The Plarailchains should only be used within stated specifications and conditions.
6. Never perform disassembly or remodeling that can affect the basic structure, performance or function of the equipment.
7. Tighten up all the brackets. Looseness of them can cause a breakdown of the whole system.
8. Do not apply unreasonable loads on metal fittings that may cause the Plarailchains to come out of place or be damaged. Loads that exceed specifications may lead to system failure.

⚠ Caution

1. Carefully read the "Hoses/Cable Installation" section in manual before use.
2. Examine the Plarailchains Performance Curve Chart in manual to select suitable type. Remember to test the Plarailchains before use since other factors may affect performance.
3. Cables and hoses to be stored must be flexible and wear-resistant, do not use wire-braided ones which are prone to damage.
4. For use under special circumstances, contact PISCO for guidance.