

Quick Fitting Type Check Valve

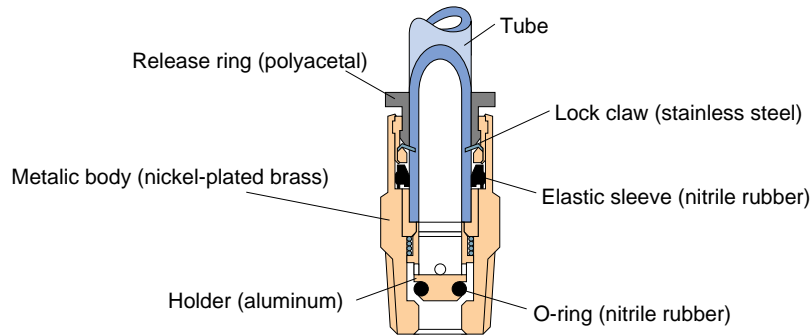
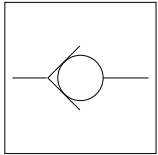
Check Valve

Features

- The Check Valve permits the air flow in one direction but checks the flow in the opposite direction, thus keeping the output pressure at a constant level.
- The Check Valve can keep the service pressure at -750mmHg (vacuum) and permits piping under low pressure.

Construction

Graphical representation



Specification

Fluid admitted	Air	
Service pressure range	0~150psi	0~0.9MPa
Operating pressure	1.45psi	0.01MPa
Working vacuum	-2.95 in. Hg	-100KPa
Service temperature range	32~140°F	0~60°C

Model Designation(Example)

CVC 6 - 01 A

(1) Type
(2) Tube dia.

mm size					
Code	4	6	8	10	12
Size	φ4	φ6	φ8	φ10	φ12

inch size					
Code	5/32	1/4	5/16	3/8	1/2
Size	φ5/32	φ1/4	φ5/16	φ3/8	φ1/2

(3) Thread size

	Metric thread(mm)		Taper pipe thread			
Code	M5	M6	01	02	03	04
Size	M5×0.8	M6×1	R1/8	R1/4	R3/8	R1/2

	Unified fine thread	Taper pipe thread			
Code	U10	01	02	03	04
Size	10~32UNF	R1/8	R1/4	R3/8	R1/2

(4) Control direction
A: Input on male thread side
B: Output on male thread side

A: Input on male thread size
Free flow

B: Output on male thread size
Free flow

*Do not make this entry for CVU.
*Indication of control direction is marked on Metallic body.

(5) Hexagon flat-to-flat specification
U: Hexagon flat-to-flat inch spec. (NPT)
No code: Hexagon flat-to-flat mm spec.

⚠ Detailed Safety Instruction

Before using the PISCO device, be sure to read the "Safety Instructions", "Common Safety Instructions for Products Listed in This Manual" on pages 23~24 and "Common Safety Instructions for Controllers" on pages 167~168.

⚠ Warning

1. Frequent switching may raise the temperature of the body, thus raising the possibility of fire. Consult PISCO about such frequent switching applications.

⚠ Caution

1. When tightening the screw, observe the relevant requirements in the Common Safety Instructions for Controllers. Excessive tightening may cause faulty valve operation.