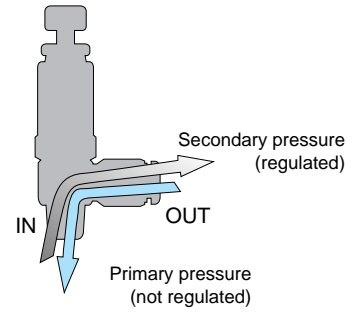


Quick Fitting Type Reducing Valve Regulator

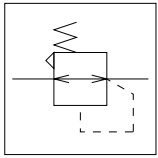
Features

- When the primary pressure is introduced from the thread side, a reduced pressure comes out from the joint side.
- The compact design with a built-in quick-fitting joint makes flexible layout possible.
- The regulator comes with a relief mechanism that facilitates adjustment of devices.
- The compact regulator with a pressure gauge is best suited for use with a manifold type solenoid valve.

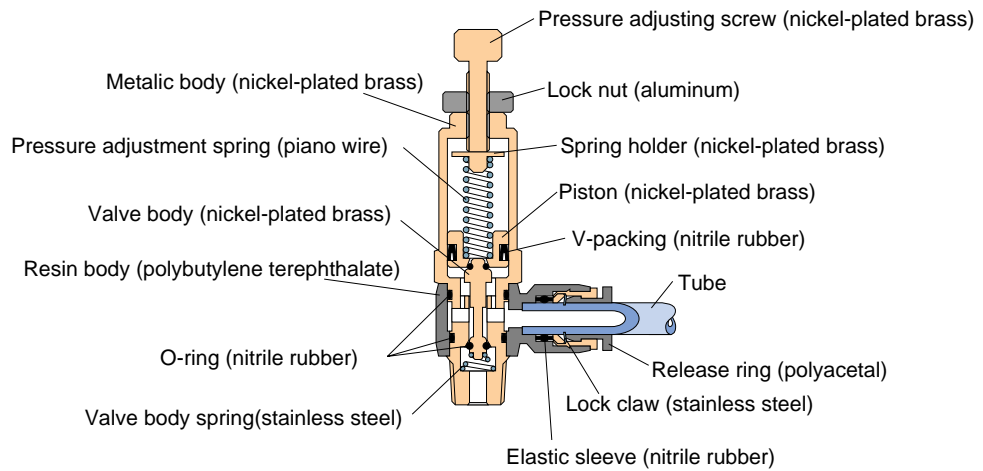
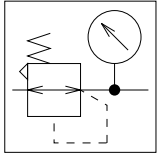


Construction

Graphical representation of regulator



Graphical representation of regulator with gauge



Specification

| | | |
|---------------------------|----------------|--------------|
| Fluid admitted | Air | |
| Service pressure range | 0~150psi | 0 ~ 0.9MPa |
| Pressure setting range | 14.2~113.8psi | 0.1 ~ 0.8MPa |
| Pressure indication range | 0~113.8psi | 0 ~ 0.8MPa |
| Accuracy (gauge) | ±5%(Full span) | |
| Service temperature range | 32~140°F | 0 ~ 60°C |

Model Designation (Example)

RVC 6 = 01

(1) Type (2) Tube dia (3) Tube, Thread size (4) Hexagon flat-to-flat specification

(1) Type

| Tube dia | mm Size | | |
|-----------|---------|----|----|
| Code | 4 | 6 | 8 |
| Size (mm) | φ4 | φ6 | φ8 |

| Tube dia | in. Size | | | |
|-----------|----------|-------|------|-------|
| Code | 5/32 | 3/16 | 1/4 | 5/16 |
| Size (mm) | φ5/32 | φ3/16 | φ1/4 | φ5/16 |

(3) Tube, Thread size

■ Thread size

| Tube dia | Metric thread | Taper pipe thread | |
|----------|---------------|-------------------|------|
| Code | M5 | 01 | 02 |
| Size | M5×0.8 | R1/8 | R1/4 |

| Tube dia | Unified fine thread | American standard Taper pipe thread | |
|----------|---------------------|-------------------------------------|--------|
| Code | U10 | N1 | N2 |
| Size | 10-32UNF | NPT1/8 | NPT1/4 |

■ Tube dia

| Thread size | mm Size | | |
|-------------|---------|----|----|
| Code | 4 | 6 | 8 |
| Size (mm) | φ4 | φ6 | φ8 |

(4) Hexagon flat-to-flat specification

U: Hexagon flat-to-flat inch spec. (NPT)
No code: Hexagon flat-to-flat mm spec.