

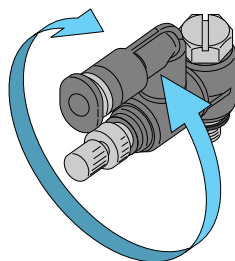
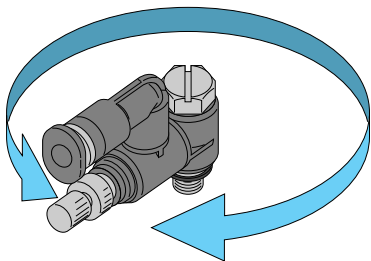
New

Quick Fitting Type Speed Control Valve Speed Controller Universal Type

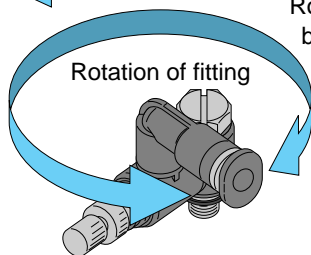
Features

- These universal-type speed controllers are recommended in situations calling for space-saving piping.
- Best combination is with pen-type cylinders.

Rotation of resin body A section

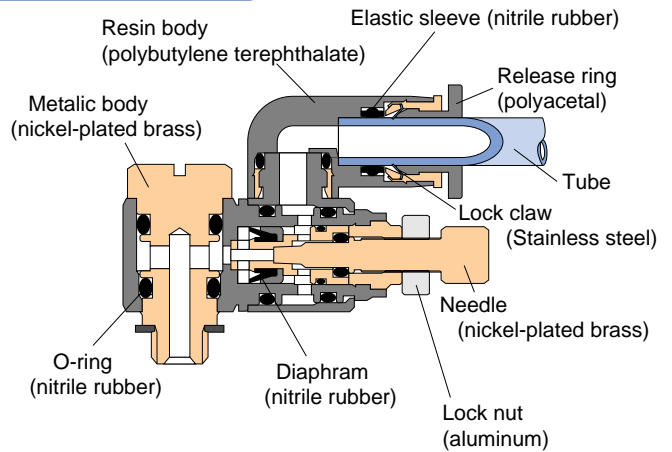


Rotation of resin body B section

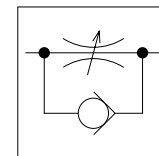


Rotation of fitting

Construction



Graphical representation



Specification

Fluid admitted	Air	
Service pressure range	0 ~ 150psi	0 ~ 0.9MPa
Check valve operating pressure	7.25psi	0.05MPa
Service temperature range	32 ~ 140°F	0 ~ 60°C

Model Designation (Example)



(1) Type

(2) Tube dia.

4 : φ4mm Only

(3) Thread size

M5 : M5×0.8mm Only

(4) Control direction

A : Meter-out control

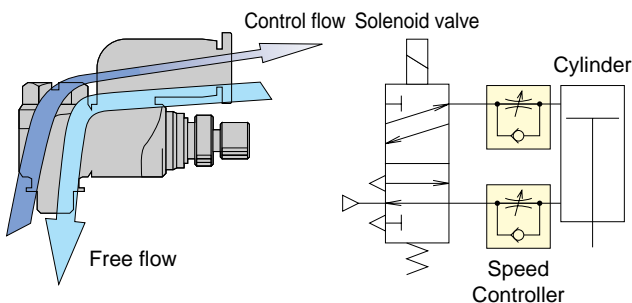
(Inscription "A" on needle top or silver-color lock nut) (*1)

B : Meter-in control

(Inscription "B" on needle top or black-color lock nut) (*2)

*1. Meter-out control

- The flow rate of air entering from the thread side can be controlled, whereas air entering from the joint side comes out of thread side at the same (not controlled) flow rate.



(5) Specification

K : Spring return type

Check valve operating pressure→0.02MPa(2.9psi)

[Service pressure range→0 ~ 0.5MPa(0~73psi)]

No code : Standard specification

(6) Body color

W : Ivory

No code : Black

*2. Meter-in control

- The flow rate of air entering from the joint side can be controlled, whereas air entering from the thread side comes out of joint side at the same (not controlled) flow rate.

