

Quick Fitting Type Speed Control Valve

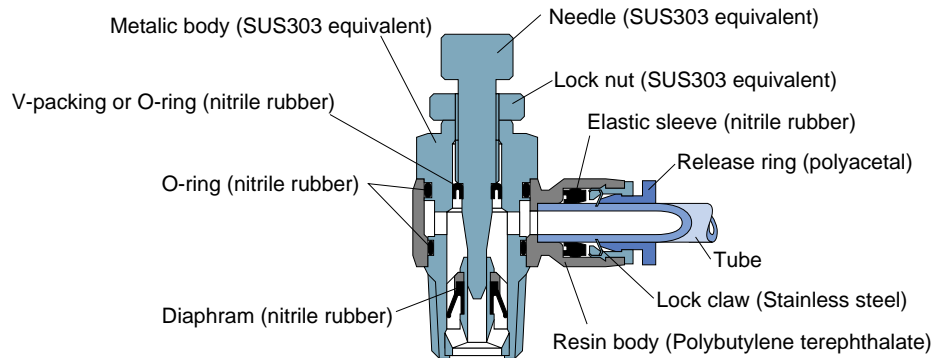
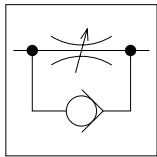
Corrosion-resistance SUS303(equivalent) Speed Controller

Features

■ Metal component of this model is made up of SUS303 equivalent stainless steel. Accordingly, this model is suited to be used in corrosive atmosphere. Sealing material is nitrile rubber.

Construction

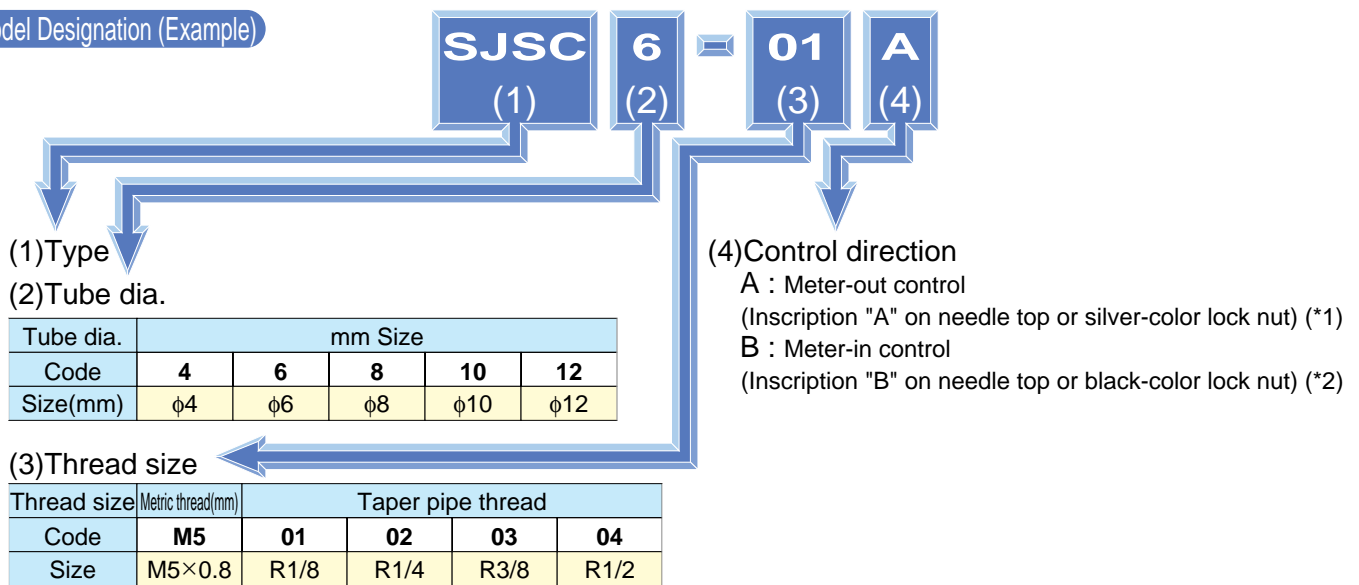
Graphical representation



Specification

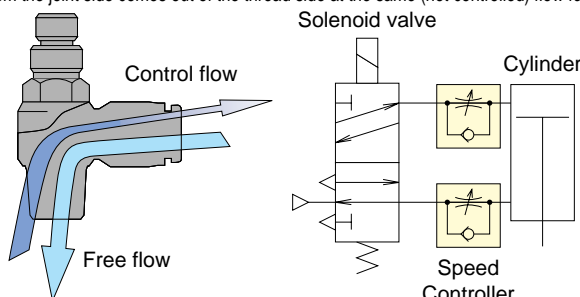
Fluid admitted	Air	
Service pressure range	0 ~ 150psi	0 ~ 0.9MPa
Check valve operating pressure	7.25psi	0.05MPa
Service temperature range	32 ~ 140°F	0 ~ 60°C

Model Designation (Example)



*1. Meter-out control

■ The flow rate of air entering from the thread side can be controlled, whereas air entering from the joint side comes out of the thread side at the same (not controlled) flow rate.



*2. Meter-in control

■ The flow rate of air entering from the joint side can be controlled, whereas air entering from the thread side comes out of the joint side at the same (not controlled) flow rate.

