

New

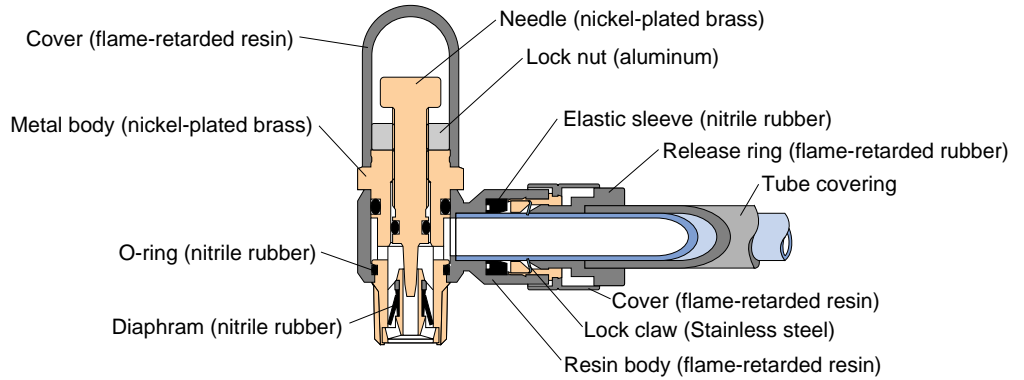
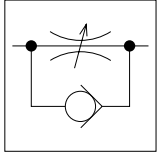
Quick Fitting Type Speed Control Valve Speed Controller Spatter

Features

- A fire-resistant resin prevents spattering. (Equivalent to V-0)
- Both needle and joint sections are covered to prevent spattering.
- Can be used with covered (spatter) tubes FB type.

Construction

Graphical representation



Specification

Fluid admitted	Air	
Service pressure range	0 ~ 150psi	0 ~ 0.9MPa
Check valve operating pressure	7.25psi	0.05MPa
Service temperature range	32 ~ 140°F	0 ~ 60°C

Model Designation (Example)



(1) Type

(2) Tube dia.

Tube dia.	mm Size				
Code	4	6	8	10	12
Size(mm)	φ4	φ6	φ8	φ10	φ12

(3) Thread size

Thread size	Metric thread(mm)	Taper pipe thread			
Code	M5	01	02	03	04
Size	M5×0.8	R1/8	R1/4	R3/8	R1/2

(4) Control direction

A : Meter-out control

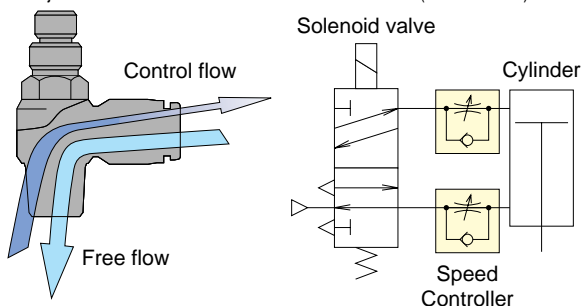
(Inscription "A" on needle top or silver-color lock nut) (*1)

B : Meter-in control

(Inscription "B" on needle top or black-color lock nut) (*2)

*1. Meter-out control

- The flow rate of air entering from the thread side can be controlled, whereas air entering from the joint side comes out of the thread side at the same (not controlled) flow rate.



(5) Specification

K : Spring return type

Check valve operating pressure→0.02MPa(2.9psi)
[Service pressure range→0 ~ 0.5MPa(0~73psi)]

No code : Standard type

(6) Flame retardation(Code:V-0)

*Be sure to specify "V-0", otherwise standard type will be delivered.

*2. Meter-in control

- The flow rate of air entering from the joint side can be controlled, whereas air entering from the thread side comes out of the joint side at the same (not controlled) flow rate.

