

# Ultra-small Barb Joint for Pneumatic Piping

## Minimal Fitting

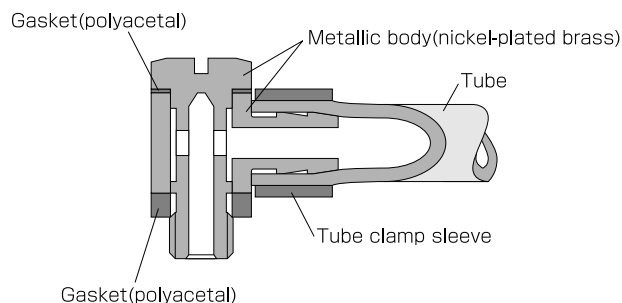
### Package 10 pcs. in a bag

- The Minimal Joint models are ultra-small barb joints for pneumatic piping.
- They are optimal for piping vacuum equipment.(Use with vacuum tubes.)
- They prove most effective in piping with small equipment or space-saving piping.

### Specifications

Fluid admitted	Air	
Service pressure range	0~0.5MPa(with vacuum tube 0~0.3MPa) 0~72psi(with vacuum tube 0~43psi)	
Working vacuum	-27.6in.Hg	-700mmHg(60Torr)
Service temperature range	32~122°F	0~50°C

### Construction



### Model Designation(Example)



#### ①Type

#### ②Tube Dia.(φD)

Code	0320	0425	0535	0640	5/32	5/32
OD	Φ3mm	Φ4mm	Φ5mm	Φ6mm	Φ5/32inch	Φ1/4inch
ID	Φ2mm	Φ2.5mm	Φ3.5mm	Φ4mm	Φ0.1inch	Φ0.18inch

#### Thread size (FM)

Code	FM5
Size	M5×0.8 female thread

#### ③Installation thread size(M)

Code	FM5	FM6	U10U
Size	M5×0.8 female thread	M6×1.0 male thread	10-32UNF

#### ④U:Hexagon flat-to-flat inch spec.(NPT)

No code:Hexagon flat-to-flat metric spec.

### Detailed Safety Instructions

Before using the PISCO device, be sure to read the "Safety Instructions", "Common Safety Instructions for Products Listed in This Manual" on page 3 and "Common Safety Instructions for Quick-Fitting Joint" on pages 4 and 5.

### ⚠ Warning

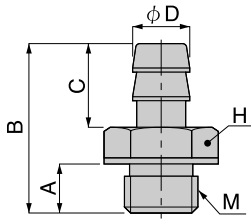
- 1.Insert the tube completely to the end of barb. Incomplete insertion may result in the coming off of the tube or leakage.
- 2.When you use an ultrasoft tube, fit a tube clamp sleeve (LS) on the connecting end of the tube. Otherwise the tube may come off, thus causing leaks.

**LC**  
MINI TYPE

Minimal Straight



Unit : inch



Model	ϕD	M	A	B	C	H	Weight (OZ)	Orifice ϕMM	Eff.a. mm2	CV
LC-0320-M3	0.08	M3	0.10	0.43	0.24	0.22				
LC-0320-M5	0.08	M5	0.12	0.45	0.24	0.28	0.05	1.20	1.70	0.09
LC-0425-M3	0.10	M3	0.10	0.47	0.28	0.22				
LC-0425-M5	0.10	M5	0.12	0.51	0.28	0.28	0.05	1.60	1.70	0.09
LC-0425-M6	0.10	M6	0.16	0.55	0.28	0.31	0.09	1.60	1.70	0.09
LC-0535-M5	0.14	M5	0.12	0.51	0.28	0.28	0.05	1.80	2.00	0.11
LC-0640-M3	0.16	M3	0.10	0.49	0.28	0.22				
LC-0640-M5	0.16	M5	0.12	0.51	0.28	0.28	0.05	2.40	3.60	0.20
LC-0640-M6	0.16	M6	0.16	0.55	0.28	0.31	0.09	2.40	3.60	0.20

Unit : inch

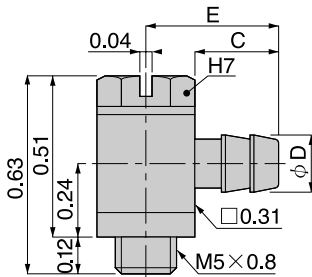
Model	ϕD	M	A	B	C	H	Weight (OZ)	Orifice ϕMM	Eff.a. mm2	CV
LC-5/32-U10U										
LC-1/4-U10U										

**LH**  
MINI TYPE

Minimal Universal Elbow



Unit : inch



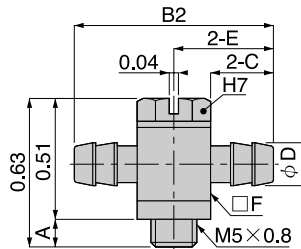
Model	ϕD	M	C	E	Weight (OZ)	Orifice ϕMM	Eff.a. mm2	CV
LH-0320-M5	0.10	M5	0.24	0.39	0.19	1.20	1.20	0.07
LH-0425-M5	0.12	M5	0.28	0.43	0.19	1.60	1.20	0.07
LH-0640-M5	0.18	M5	0.28	0.43	0.21	2.40	1.50	0.08

**LB**  
MINI TYPE

Minimal Tee



Unit : inch



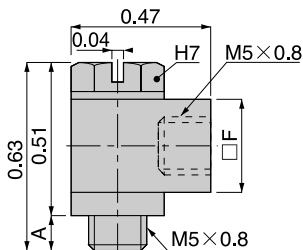
Model	ϕD	M	A	B1	B2	L	C	E	□F	Weight (OZ)	Orifice ϕMM	Eff.a. mm2	CV
LB-0640-M5	0.18	M5	0.12	0.63	0.87	0.24	0.28	0.43	0.31	0.23	2.00	1.70	0.09

**LH**  
MINI TYPE

Universal Elbow



Unit : inch



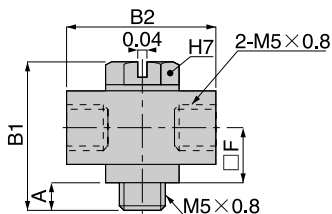
Model	M1	M2	A	B1	B2	L	□F	Weight (OZ)	Orifice ϕMM
LH-FM5-M5	M5	M5	0.12	0.63	0.47	0.24	0.31	0.23	1.80

**LB**  
MINI TYPE

Universal Tee

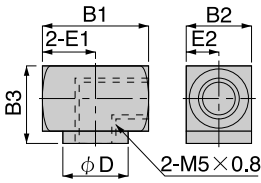


Unit : inch



Model	M	A	B1	B2	L	□F	Weight (OZ)	Orifice ϕMM
LB-FM5-M5	M5	0.12	0.63	0.63	0.24	0.31	0.26	1.80

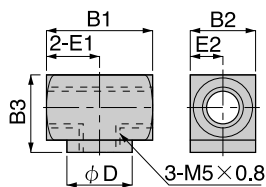
**LL** Union Elbow



Unit : inch

Model	M	B1	B2	B3	E1	E2	φD	Weight (OZ)
LL-FM5	M5	0.51	0.31	0.37	0.26	0.16	0.31	0.19

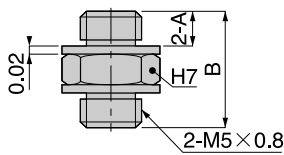
**LE** Union Tee



Unit : inch

Model	M	B1	B2	B3	E1	E2	φD	Weight (OZ)
LE-FM5	M5	0.51	0.31	0.37	0.26	0.16	0.31	0.19

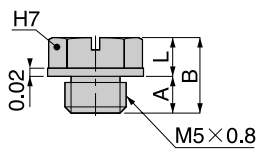
**LN** Nipple



Unit : inch

Model	A	B	Weight (OZ)	Orifice φMM	Eff.a. mm2	CV
LN-M5-M5	0.14	0.33	0.1	2.50	2.10	0.11

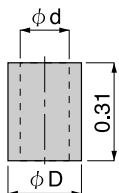
**LP** Plug



Unit : inch

Model	A	B	L	Weight (OZ)
LP-M5	0.14	0.21	0.10	0.05

**LS** For Tube Clamp Sleeve



Unit : inch

Model	φD	φd	For Tube (mm)	Weight (OZ)
LS-0425	0.24	0.16	φ4	0.02
LS-0640	0.31	0.24	φ6	0.02

