

# Insert ring

## Features

- The Insert Ring, inserted in a tube, prevents the tube from contracting. This makes it possible to use a very soft tube with the Tube Fitting. (e.g., NC Tube)
- The Insert Ring should always be used when water is admitted to the Tube Fitting. (e.g. WA, WB, FB, SNT, SFT Tube)

## Model Designation(Example)



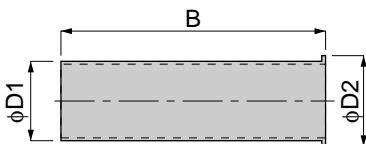
(1)Applicable tube dia. (O.D. / I.D.)

Code	0425	0640	0850	0860	1065	1075	1280	1290	1613
Tube O.D.	φ4mm	φ6mm	φ8mm	φ8mm	φ10mm	φ10mm	φ12mm	φ12mm	φ16mm
Tube I.D.	φ2.5mm	φ4mm	φ5mm	φ6mm	φ6.5mm	φ7.5mm	φ8mm	φ9mm	φ13mm

## ⚠ Detailed Safety Instructions

Before using the PISCO device, be sure to read the "Safety Instructions", "Common Safety Instructions for Products Listed in This Manual" on pages 23~24 and "Common Safety Instructions for Tubes" on page 551.

## WR Insert ring



Model	Applicable tube O.D.xI.D.(φ)	unit:mm				Wall thickness
		φD1	φD2	B		
WR 0425	4×2.5	2.5	3	18	0.2	
WR 0640	6×4	4	4.5	18.5	0.2	
WR 0850	8×5	5	5.5	20	0.2	
WR 0860	8×6	6	6.5	20	0.2	
WR 1065	10×6.5	6.5	7	22	0.2	
WR 1075	10×7.5	7.5	8	22	0.2	
WR 1280	12×8	8	8.5	25	0.2	
WR 1290	12×9	9	9.5	25	0.2	
WR 1613	16×13	13	13.5	27	0.2	

\*Insert ring is made of SUS304.